

All that progress we've made has happened while this has happened too

Country of last residence not specified

Oceania

Africa

Mexico

Caribbean and other America

South America

Central America

Canada

Other Asia

India

China

Other Europe

United Kingdom

Russia

Norway-Sweden

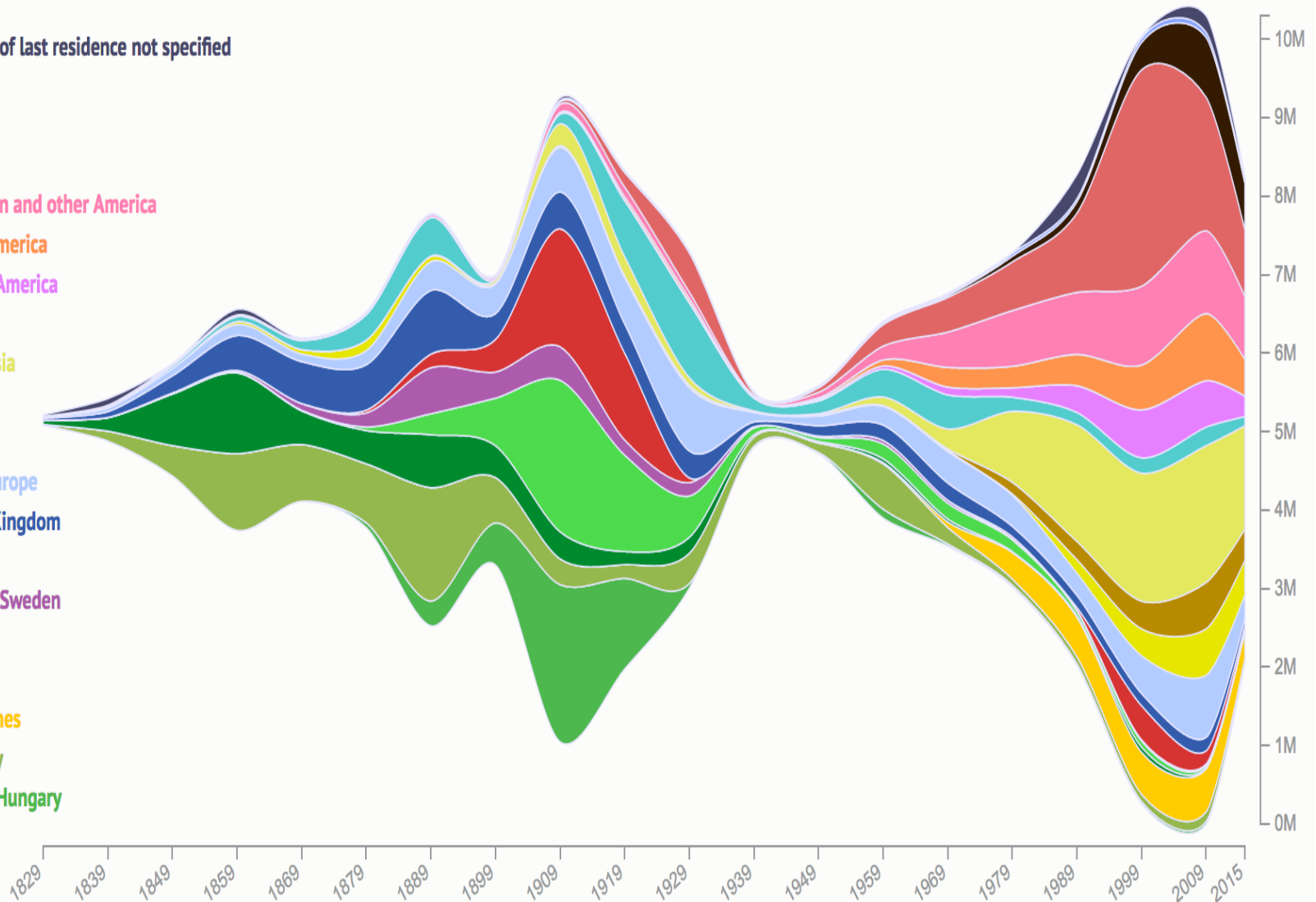
Italy

Ireland

Philippines

Germany

Austria-Hungary



Global deaths in conflicts since the year 1400

Each circle represents one conflict. [Data from the *Conflict Catalog* (1400-2000)]
 The **size** represents the absolute number of fatalities (military + civilian fatalities)
 The **position** on the y-axis represents the fatality rate* (military + civilian fatalities)

Military + civilian death rate* for 1400-2000 [Data from *Conflict Catalog*] – 15 year moving-average
Military death rate* for 1946-2013 [Data from the PRIO Institute]

* All death rates are calculated as the share of fatalities relative to the world population at the time (rate of deaths per 100,000 people).

